

Piano



mf

D ma9(6) E 7 C E7/F F 7



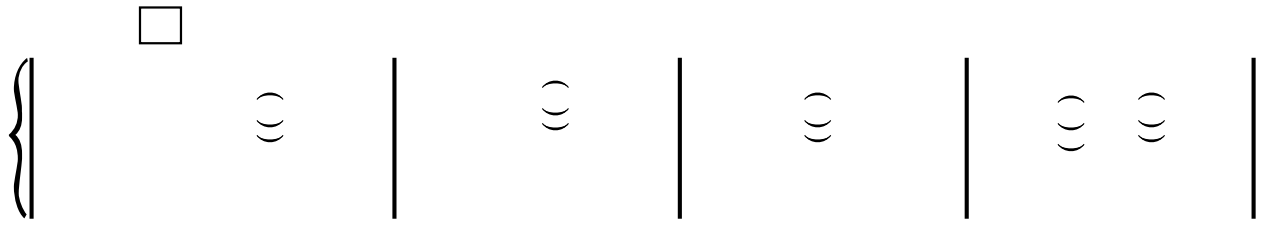
37

B^bE^b9 G< .11 C7[^bA] D^bma9(6) G^b%(#11) *mf*

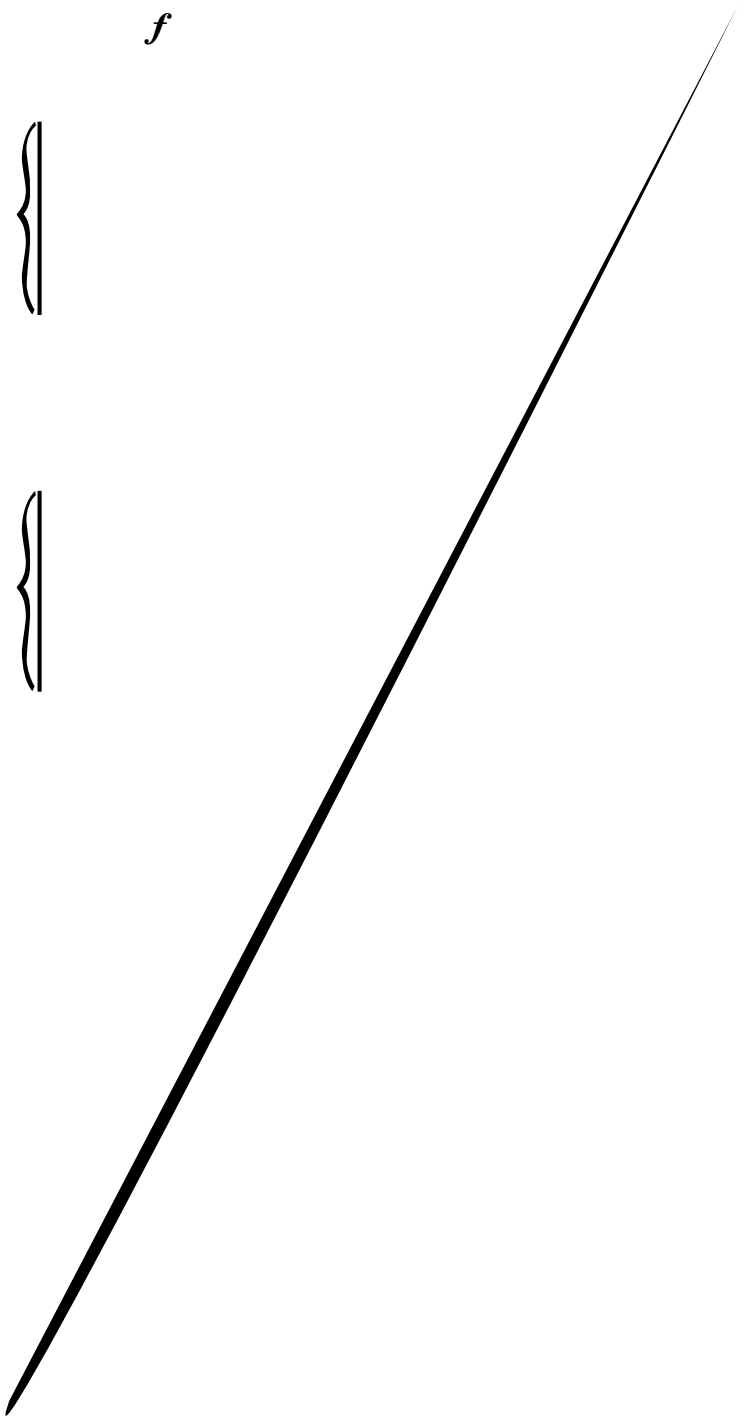
41

Gmi7(4) F(" 2)/A B^bE^b,9 Csus D^b%(#11)

G^bE^b,7(b5) A^b%



f



D^{ma9(6)}

E[%]

C^{7/F}



|

|

|

|

|

|

mf



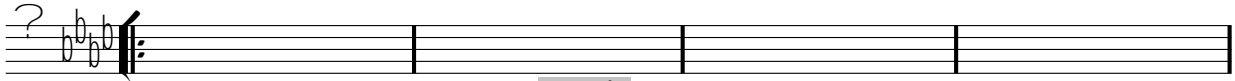
SOLOS: Backgrounds as desired

D[♭]ma9(6)

E[♭]%

C♯E7/F

F<7(♭4)

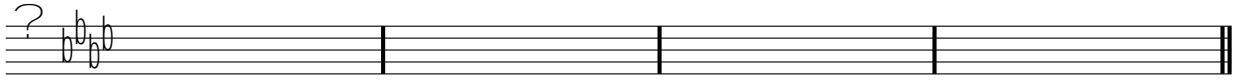


f
B[♭]♯E9

G♯E7/C

C7[♯A]

D[♭]♯E,9(♯11)



133

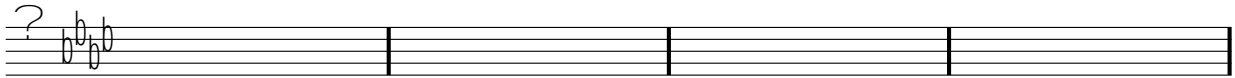
B[♭]♯E9

F♯E9

B[♭]♯E9

/C

D[♭]♯E,♯7(b5)



G[♭]♯E,♯7(b5)

A[♭]%

B[♭]♯E9

C7[♯A]

C♯E7/F

F♯E9



141

mf

G[♭]♯E,♯7(b5)

F7[♯A]



149

p

A<7(b5)

D7[♯A]



C<7(b5)

mf

D[♭]♯E,9(♯11)

G♯E7/C

C7[♯A]



157

D[♭]ma9(6)

E[♭]%

E[♭]/F

G/F

F(2)



|

|

|

|

}

}

}

}



187-190



193

f



ff



A < 7(b5) D7[âA] As written C < ..11

A musical staff with four measures. The first measure has a question mark and a box above it. The second measure has a box containing 'D7[âA]'. The third measure has a box containing 'As written'. The fourth measure has a box containing 'C < ..11'. There are notes and accidentals on the staff, including a question mark.

mf

As written

D(E, 9(#11))

f *f*

221

A musical staff with four measures. The first measure has a piano accompaniment with a dynamic marking of *mf*. The second measure has a dynamic marking of *f*. The third measure has a dynamic marking of *f*. The fourth measure has a dynamic marking of *f*. There are notes and accidentals on the staff, including a question mark and a box containing 'D(E, 9(#11))'. There are also markings for 'As written' and '>' above the notes.

f *ff* *ff*

4 4 3/4 3/4

225 227-230

A musical staff with four measures. The first measure has a dynamic marking of *f*. The second measure has a dynamic marking of *ff*. The third measure has a dynamic marking of *ff*. The fourth measure has a dynamic marking of *ff*. There are notes and accidentals on the staff, including a question mark and a box containing 'D(E, 9(#11))'. There are also markings for 'As written' and '>' above the notes.

B^b E^b9

B^b Ma7/C

C7[^b9]

D^b ma9(6)

G^b % (#11)

255 *mf*

G7(E, F7(b5)) A7% B7(E+9) C7[A4]

260 *mf*

264

268 *f*